



GMT MONTHLY MEMBERSHIP PROGRESS REPORT

Results as of: 5/31/2020

GMT Constitutional Area 6, Group J

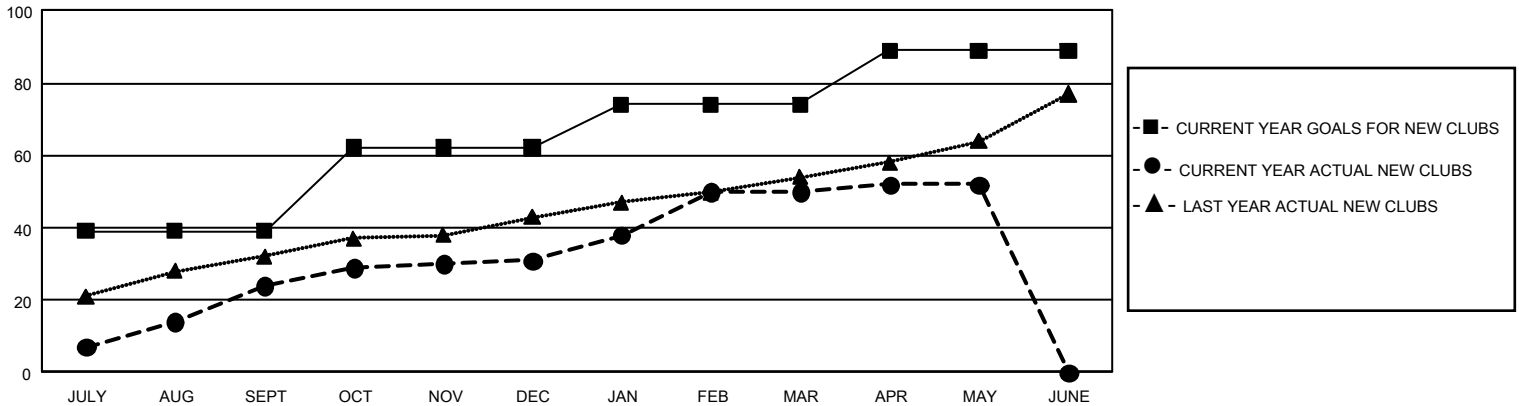
GMT: OPEN

REPORT DOES NOT INCLUDE CLUBS IN UNDISTRICTED AREAS.

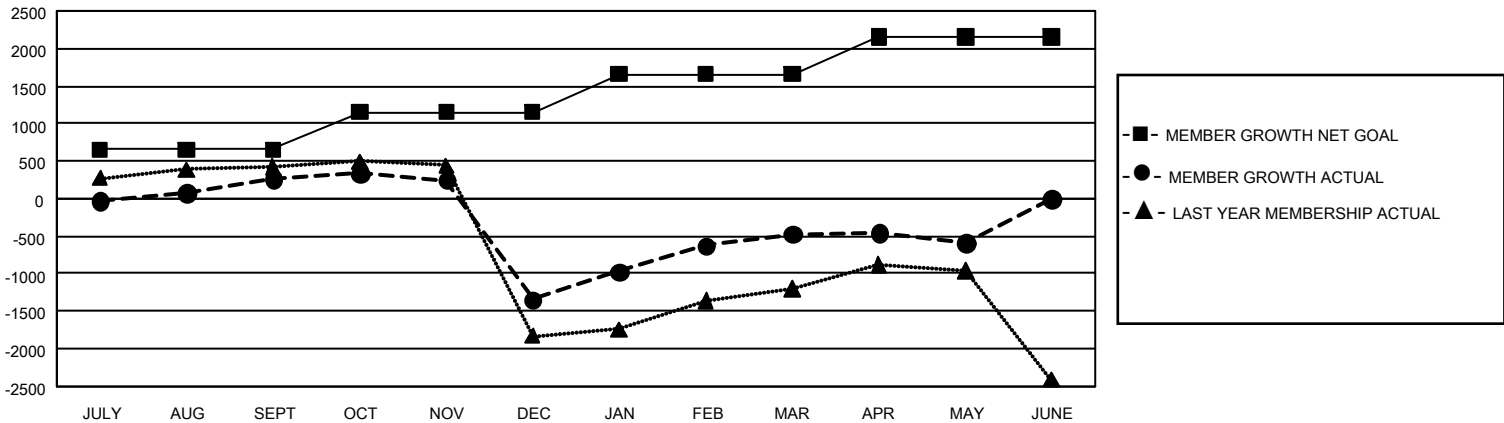
Clubs			
RESULTS FOR 2019-2020			
QUARTER	NEW CLUB GOAL	NEW CLUBS	DROPPED CLUBS
JULY/AUG/SEPT	117	24	3
OCT/NOV/DEC	69	7	50
JAN/FEB/MAR	36	19	7
APR/MAY/JUNE	45	2	0

Members			
RESULTS FOR 2019-2020			
QUARTER	MEMBER GROWTH NET GOAL	MEMBER GROWTH ACTUAL	DROPPED MEMBERS ACTUAL (including transfers)
JULY/AUG/SEPT	1,965	1,483	1,014
OCT/NOV/DEC	1,485	501	2,048
JAN/FEB/MAR	1,530	1,753	525
APR/MAY/JUNE	1,470	329	360

GOALS AND ACTUAL NEW CLUBS CUMULATIVE



GOALS AND ACTUAL MEMBERS CUMULATIVE



DROPPED CLUBS: 60

502 CLUBS OF 1,057 ADDED 1 OR MORE NEW MEMBERS

GENDER DISTRIBUTION

MALE 22,223 (69.81%)
FEMALE 9,612 (30.19%)

DROPPED MEMBERS

DECEASED	75
CLUB CANCELLED	1,255
OTHER	2,616
TOTAL	3,946

[CLICK HERE FOR CUMULATIVE MEMBERSHIP DATA](#)

TOTAL FAMILY UNIT MEMBERS 16,699

FAMILY MEMBERS PAYING HALF DUES 9,639